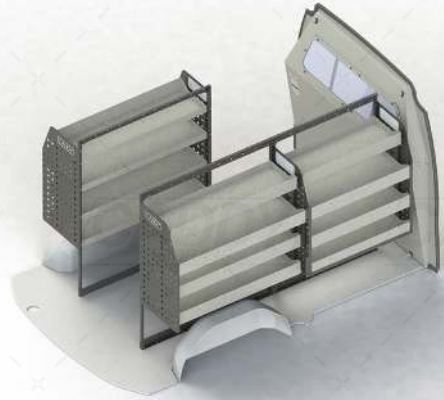
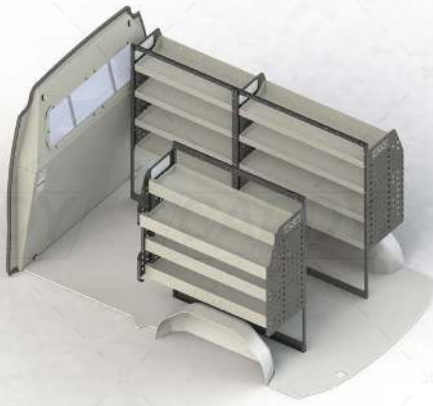


# VTK-HYST21-003 - SHELVING KIT SPECIFICATIONS



## DRIVER SIDE FRONT



### ADJ01-G

Unit Size: 850mm w x 1290mm h  
End panels: Standard Panels  
No. of shelves: 4  
Shelf Depth: 310mm (Row 1), 410mm (Rows 2-4)  
Plastic Bins: None

## DRIVER SIDE REAR



### ADJ01-H SPEC L

Unit Size: 1080mm w x 1290mm h  
End panels: Standard Panel Right, Special Left  
No. of shelves: 4  
Shelf Depth: 310mm (Row 1), 410mm (Row 2), 350mm (Rows 3-4)  
Plastic Bins: None

## PASSENGER SIDE REAR



### ADJ01-H SPEC R

Unit Size: 1080mm w x 1290mm h  
End panels: Standard Panel Left, Special Right  
No. of shelves: 4  
Shelf Depth: 310mm (Row 1), 410mm (Row 2), 350mm (Row 3-4)  
Plastic Bins: None

VTK-HYST21-003 TO SUIT THE FOLLOWING:

**Model: Staria-Load**  
**Make: Hyundai**  
**Year: 08/2021+**

Please check manufacturing plate for the make and model of your vehicle.

Cargo barrier and flooring depicted in images not included in Trade Kit. These accessories are available separately.

**CADDY**  
STORAGE