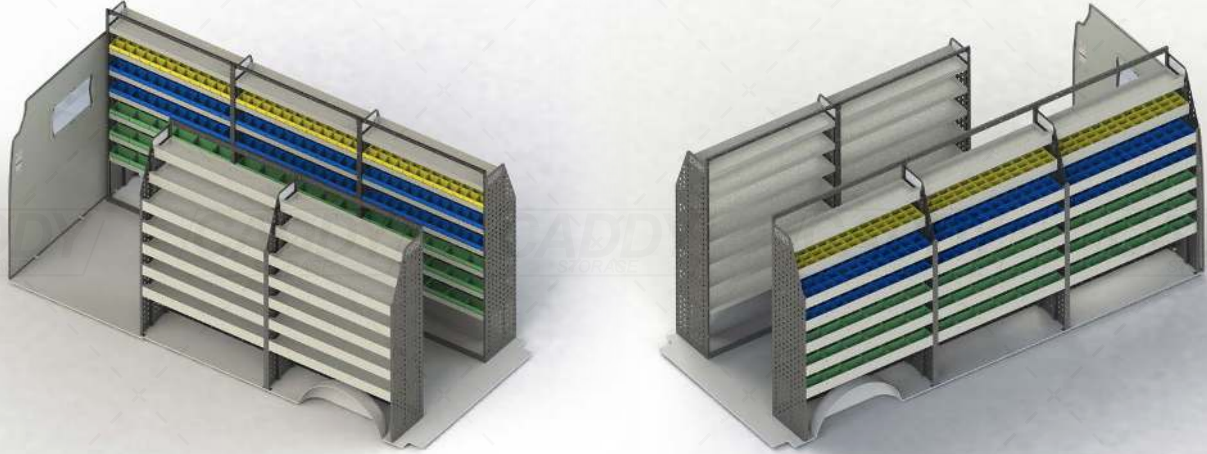


# VTK-FT14JHR-003 - SHELVING KIT SPECIFICATIONS



## DRIVER SIDE FRONT



**K15-1260 (with Plastic Bins)**  
 Unit Size: 1260mm w x 1950mm h  
 End panels: Full Panels  
 No. of shelves: 7  
 Shelf Depth: 240mm (Row 1), 310mm (Row 2),  
 410mm (Rows 3-7)  
 Plastic Bins: 12 x PBC 3.0, 24 x PBC 4.0, 18 x PBC 8.0

## DRIVER SIDE MID



**K15-1260 (with Plastic Bins)**  
 Unit Size: 1260mm w x 1950mm h  
 End panels: Full Panels  
 No. of shelves: 7  
 Shelf Depth: 240mm (Row 1), 310mm (Row 2),  
 410mm (Rows 3-7)  
 Plastic Bins: 12 x PBC 3.0, 24 x PBC 4.0, 18 x PBC 8.0

## DRIVER SIDE REAR



**K15-1260 (with Plastic Bins)**  
 Unit Size: 1260mm w x 1950mm h  
 End panels: Full Panels  
 No. of shelves: 7  
 Shelf Depth: 240mm (Row 1), 310mm (Row 2),  
 410mm (Rows 3-7)  
 Plastic Bins: 12 x PBC 3.0, 24 x PBC 4.0, 18 x PBC 8.0

## PASSENGER SIDE FRONT



**K15-1260**  
 Unit Size: 1260mm w x 1950mm h  
 End panels: Full Panels  
 No. of shelves: 7  
 Shelf Depth: 240mm (Row 1), 310mm (Row 2),  
 410mm (Rows 3-7)  
 Plastic Bins: None

## PASSENGER SIDE REAR



**K15-1260**  
 Unit Size: 1260mm w x 1950mm h  
 End panels: Full Panels  
 No. of shelves: 7  
 Shelf Depth: 240mm (Row 1), 310mm (Row 2),  
 410mm (Rows 3-7)  
 Plastic Bins: None

VTK-FT14JHR-003 TO SUIT THE FOLLOWING:

**Model: Transit Cargo 350L**  
**Make: Ford**  
**Wheel Base: XLWB**  
**Roof: High**  
**Year: 02/2014+**

Please check manufacturing plate for the make and model of your vehicle.

Cargo barrier and flooring depicted in images not included in Trade Kit. These accessories are available separately.

**CADDY**  
 STORAGE