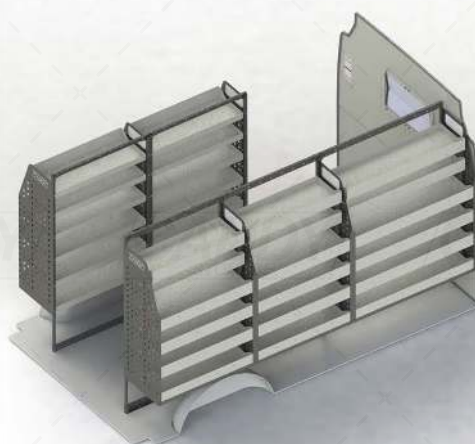
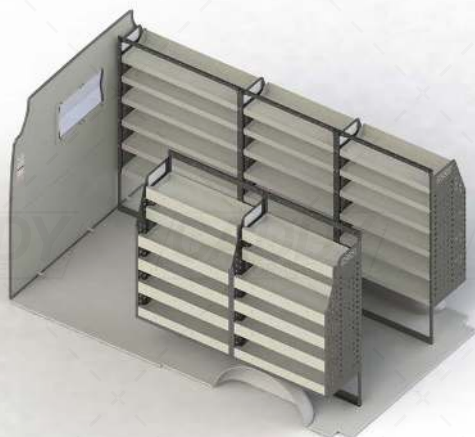


## VTK-FDUCMLR-001 - SHELVING KIT SPECIFICATIONS



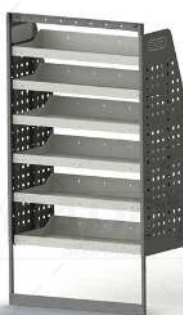
### DRIVER SIDE FRONT



#### ADJ28-L

Unit Size: 1080mm w x 1570mm h  
End panels: Standard Panels  
No. of shelves: 6  
Shelf Depth: 310mm (Rows 1 - 2), 410mm (Rows 3 - 6)  
Plastic Bins: None

### DRIVER SIDE MID



#### ADJ28-K

Unit Size: 850mm w x 1570mm h  
End panels: Standard Panels  
No. of shelves: 6  
Shelf Depth: 310mm (Rows 1 - 2), 410mm (Rows 3 - 6)  
Plastic Bins: None

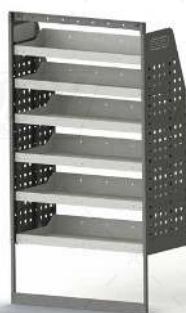
### DRIVER SIDE REAR



#### ADJ28-K

Unit Size: 850mm w x 1570mm h  
End panels: Standard Panels  
No. of shelves: 6  
Shelf Depth: 310mm (Rows 1 - 2), 410mm (Rows 3 - 6)  
Plastic Bins: None

### PASSENGER SIDE FRONT



#### ADJ28-K

Unit Size: 850mm w x 1570mm h  
End panels: Standard Panels  
No. of shelves: 6  
Shelf Depth: 310mm (Rows 1 - 2), 410mm (Rows 3 - 6)  
Plastic Bins: None

### PASSENGER SIDE REAR



#### ADJ28-K

Unit Size: 850mm w x 1570mm h  
End panels: Standard Panels  
No. of shelves: 6  
Shelf Depth: 310mm (Rows 1 - 2), 410mm (Rows 3 - 6)  
Plastic Bins: None

VTK-FDUCMLR-001 TO SUIT THE FOLLOWING:

**Model:** Ducato 6th Gen  
**Make:** Fiat  
**Wheel Base:** MWB  
**Roof:** Low  
**Year:** 01/2014+

Please check manufacturing plate for the make and model of your vehicle.

Cargo barrier and flooring depicted in images not included in Trade Kit. These accessories are available separately.

**CADDY**  
STORAGE