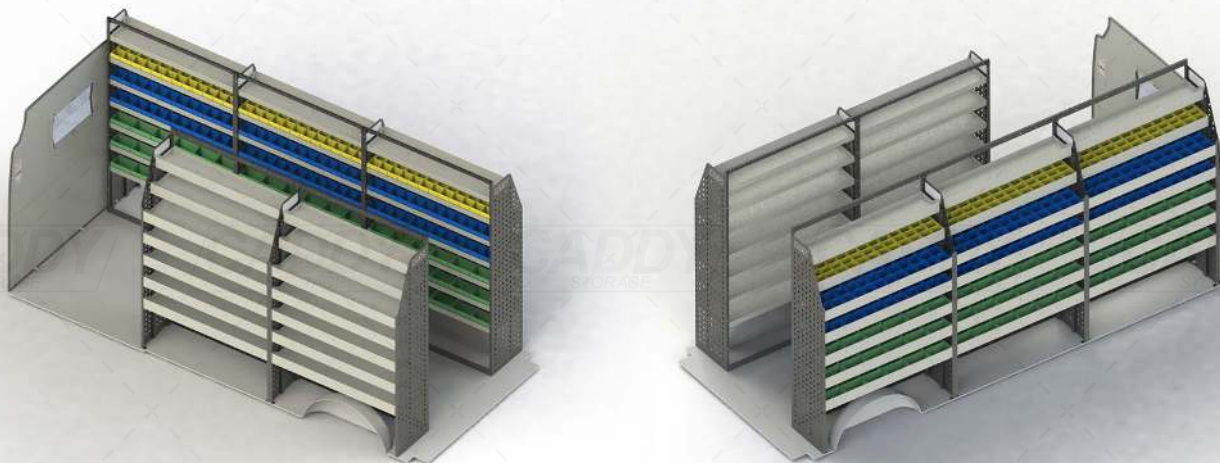


## VTK-FDUCXLMR-003 - SHELVING KIT SPECIFICATIONS



Please note: The render above does not accurately display the shelving units below. This is for illustrative purposes only.

### DRIVER SIDE FRONT



#### ADJ29-P

Unit Size: 1080mm w x 1760mm h

End panels: Standard Panels

No. of shelves: 6

Shelf Depth: 310mm (Rows 1 - 2), 410mm (Rows 3 - 6)

Plastic Bins: 20 x PBC 3.0, 20 x PBC 4.0, 10 x PBC 8.0

### DRIVER SIDE MID



#### ADJ29-Q

Unit Size: 1260mm w x 1760mm h

End panels: Standard Panels

No. of shelves: 6

Shelf Depth: 310mm (Rows 1 - 2), 410mm (Rows 3 - 6)

Plastic Bins: 24 x PBC 3.0, 24 x PBC 4.0, 12 x PBC 8.0

### DRIVER SIDE REAR



#### ADJ29-Q

Unit Size: 1260mm w x 1760mm h

End panels: Standard Panels

No. of shelves: 6

Shelf Depth: 310mm (Rows 1 - 2), 410mm (Rows 3 - 6)

Plastic Bins: 24 x PBC 3.0, 24 x PBC 4.0, 12 x PBC 8.0

### PASSENGER SIDE FRONT



#### ADJ28-Q

Unit Size: 1260mm w x 1760mm h

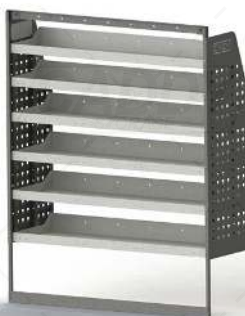
End panels: Standard Panels

No. of shelves: 6

Shelf Depth: 310mm (Rows 1 - 2), 410mm (Rows 3 - 6)

Plastic Bins: None

### PASSENGER SIDE REAR



#### ADJ28-Q

Unit Size: 1260mm w x 1760mm h

End panels: Standard Panels

No. of shelves: 6

Shelf Depth: 310mm (Rows 1 - 2), 410mm (Rows 3 - 6)

Plastic Bins: None

VTK-FDUCXLMR-003 TO SUIT THE FOLLOWING:

**Model: Ducato 6th Gen**

**Make: Fiat**

**Wheel Base: XLWB**

**Roof: Mid**

**Year: 01/2014+**

Please check manufacturing plate for the make and model of your vehicle.

Cargo barrier and flooring depicted in images not included in Trade Kit. These accessories are available separately.

**CADDY**  
STORAGE