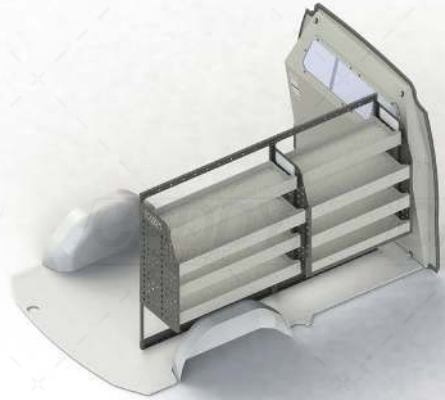
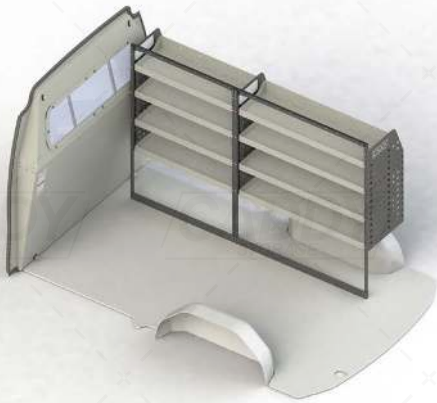


## VTK-HYST21-001 - SHELVING KIT SPECIFICATIONS



**DRIVER SIDE FRONT**



**ADJ01-G**

Unit Size: 850mm w x 1290mm h

End panels: Standard Panels

No. of shelves: 4

Shelf Depth: 310mm (Row 1), 410mm (Rows 2-4)

Plastic Bins: None

**DRIVER SIDE REAR**



**ADJ01-H SPEC L**

Unit Size: 1080mm w x 1290mm h

End panels: Standard Panel Right, Special Left

No. of shelves: 4

Shelf Depth: 310mm (Row 1), 410mm (Row 2), 350mm (Rows 3-4)

Plastic Bins: None

VTK-HYST21-001 TO SUIT THE FOLLOWING:

**Model: Staria-Load**

**Make: Hyundai**

**Year: 08/2021+**

Please check manufacturing plate for the make and model of your vehicle.

Cargo barrier and flooring depicted in images not included in Trade Kit. These accessories are available separately.